

# **OPEN**

# **MINUTE ITEM**

# **ATTACHMENTS**

**Ordinary meeting of the  
Hearings Panel - Other**

**Friday 25 September 2020  
Commencing at 9.01a.m.  
Rūma Waimārama**

**Floor 2A, Civic House  
110 Trafalgar Street, Nelson**

## **TABLE OF CONTENTS**

## **PAGE**

### **4.2 Bike Nelson Bays - Installation of Bike Racks in Montgomery Square and Trafalgar Street**

- A. Bevan Woodward Bike Nelson Bays IItem 5 Powerpoint Public Forum Hearings Panel - Other 25Sep2020 (A2476126).pdf

**3**

### **4.3 State Cinemas and Cinema Equipment - Inner City Cycle Facilities**

- A. Mark Christensen State Cinemas and Cinema Equipment Inner City  
Cycle Facilities Tabled Document Public Forum Hearings Panel -  
Other 25Sep2020 (A2476145).pdf

10



# Installation of bike racks in Montgomery Square and Trafalgar Street

*Presentation to the Hearings Panel, Sept 25, 2020*

*by Bevan Woodward, Transport Planner.*

[bevan@betterworldnz.com](mailto:bevan@betterworldnz.com)

A2476126

## Good demand from people cycling...





## Fit for purpose?..

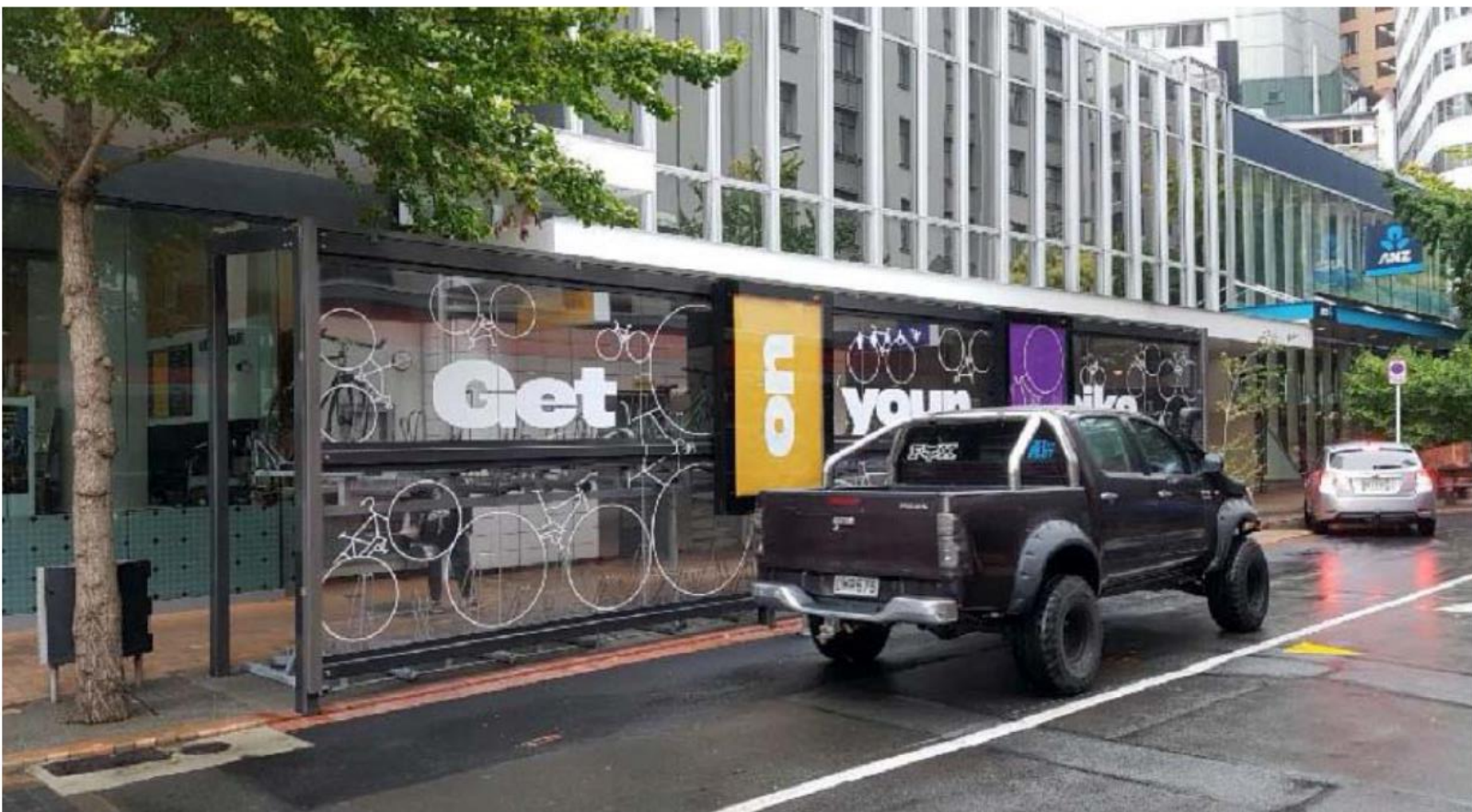


Item 4.2: Bike Nelson Bays - Installation of Bike Racks in Montgomery Square and  
Trafalgar Street: Attachment 1

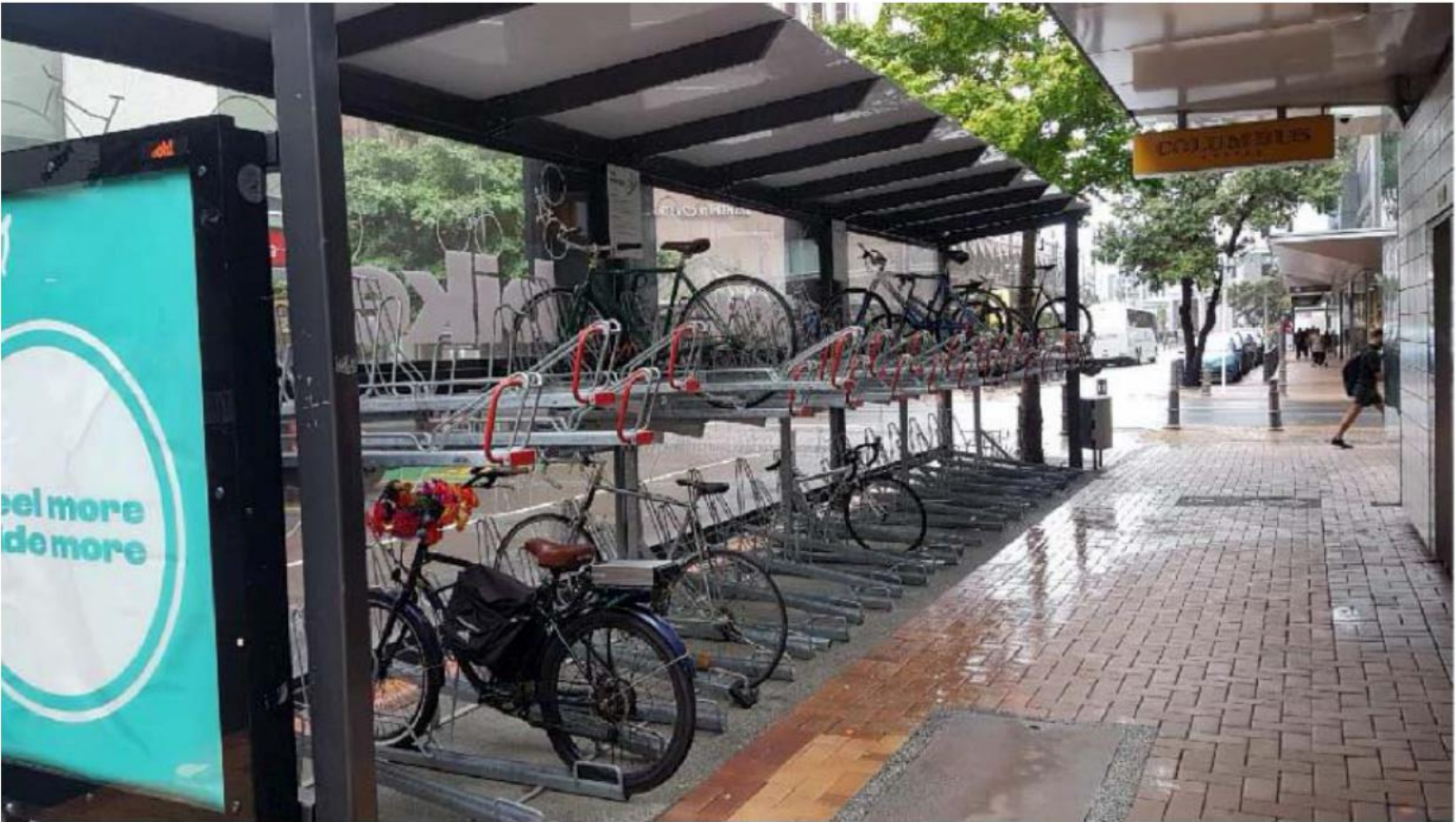




Mode shift will be worth it...



We commend Council...







# Installation of bike racks in Montgomery Square and Trafalgar Street

*Presentation to the Hearings Panel, Sept 25, 2020*

*by Bevan Woodward, Transport Planner.*

[bevan@betterworldnz.com](mailto:bevan@betterworldnz.com)

## Item 4.3: State Cinemas and Cinema Equipment - Inner City Cycle Facilities: Attachment 1

### Presentation to NCC re Cycle Stands & Loss Of Car Parking

#### **Cinema background:**

- Founded 1992
- 100% locally owned
- Highest attendance ratio in NZ
- It's a regional facility not just a central city facility

#### **Key Factors Contributing To Performance:**

- Easy access to car parking
- Character of the building & quality of the venue
- Diverse and up-market character of the local audience – we are the only major cinema location in NZ that combines mainstream and arthouse under one roof as standard programming
- Provision of food, wine and espresso – Stefanos – in addition to traditional cinema candy bar
- Over 80% of ticket sales are online with well established advance booking

#### **Car Parking:**

- All modern multiplex cinemas today are built immediately adjacent to car park areas – access to easy car parking is essential to the viability of cinemas
- When the Information Centre was built Millers Acre lost about 1/3 of its car park capacity
- During weekdays today it is often hard to find a car park in Millers Acre.
- Cinema use of car parks is directly complimentary to retailer car park requirements – our peak usage is after 5pm weekdays and all day on the weekends (outside of school holidays).
- On any given evening the Trafalgar St car parks from Halifax St to New St/Wakatu Lane are full as are the parks down Halifax St to Halstead St
- Our 2019 survey indicated that over 80% of cinema customers travel to the cinema by car – mostly in family groups – very few single occupant cars
- A significant number of respondents to our survey commented on issues with traffic congestion and car parking

#### **Character of the building & quality of the venue**

- The original 4 screen project and the recent refurbishment & strengthening enhances the building and the fitout were done to the highest standards reflecting our philosophy of careful planning and “do it once and do it right” approach.
- The State Cinema is one of the highest quality cinema venues in NZ – especially in sound & picture quality and auditorium comfort - better than most cinemas in the metropolitan cities
- In 1992 we were delighted to obtain the most significant art deco building (reflecting the golden age of cinema) on the main street and have continued to enhance the heritage character of the building - both the interior and the exterior.

A2476145

Mark Christensen, Director  
State Cinemas and Cinema Equipment  
Public Forum, Hearings Panel - Other  
25 September 2020

## Item 4.3: State Cinemas and Cinema Equipment - Inner City Cycle Facilities: Attachment 1

- Over the last few years we have invested well over \$2m in refurbishment and seismic strengthening to ensure a continued life for the State Cinema.
- In a survey a few years back the State was listed in the top 3 favoured "going out" venues in the city.

### **The Current Cycle Rack Proposal:**

- The proposal as currently configured will remove a number of car parks from Trafalgar St opposite the cinema. These car parks are generally full most evenings and during the weekends from mid-afternoon from cinema patrons.
- We have already lost a significant number of car parks in Miller Acre and this loss coincided with a drop in cinema attendance (attendance in recent years is 30% down from pre Information Centre days)
- The proposal is not in keeping with maintaining the character of the street.
- In our view it would be preferable to spread smaller cycle racks evenly around the central city area than to concentrate the racks into a couple of large high impact double level racks located at the periphery of the main street as is currently proposed.
- In keeping with our "do it once and do it right" philosophy it is preferable to spend the time to get this right even if it costs a bit more than the most immediate cheapest option (which will inevitably cost more in the long run)
- Further loss of car parks to the cinema will detrimentally affect our business and encourage cinema customers from Richmond and beyond not to travel into Nelson City. A lot of cinema visits from further out are combined with shopping visits.

A final comment on any idea of closing the main street further to cars – I witnessed first hand the results when New Plymouth put a pedestrian precinct into the middle of Devon St – famous as the longest main street in the Southern Hemisphere. This was roughly equivalent to blocking off the central part of Trafalgar St. Beforehand it had been a vibrant and busy central city retail area – afterwards it became an empty part of town which shoppers were reluctant to walk through, and the central city retailers moved location en mass into a characterless mall situated a block down from Devon St.

Any proposal to close streets to cars must be very carefully thought through and careful consideration given to the effect on the character and viability of the area both for businesses and for the public. The very last thing we would want for Nelson is to see it's vitality and character diluted as has happened to so many other provincial cities.

A2476145

Mark Christensen, Director  
State Cinemas and Cinema Equipment  
Public Forum, Hearings Panel - Other  
25 September 2020