

OPEN

MINUTE ITEM

ATTACHMENTS

Ordinary meeting of the
Sports and Recreation Committee

Tuesday 21 August 2018
Commencing at 9.00a.m.
Council Chamber

Civic House

110 Trafalgar Street, Nelson

TABLE OF CONTENTS

PAGE

4.1 Public Forum

- | | | |
|----|--|---|
| A. | A2034613 - M Cameron and M Saunders, Champion Green Facilities Committee | 2 |
| B. | A2035367 - J Scoltock and E Richards, Vertical Limits | 4 |

NCC SPORTS & RECREATION COMMITTEE

PUBLIC FORUM 21 AUGUST, 2018

Items for consultation re- Champion Green Future Developments:

Current Scenario: To date no open consultation has been initiated by NCC S & R Committee on usage and development re-sports grounds and/or facilities with current and possible future user groups of the Champion Green sports areas.

Future Scenario: The Champion Green Facilities Committee representing current user groups wish to meet representatives of the NCC S & R Committee to promote consultation and open discussion opportunities on the following areas:

1. WHAT FUTURE PLANS AND PROPOSALS DOES NCC S&R HAVE FOR THE CHAMPION ROAD TO SAXTON FIELD ROAD LINK DESIGN AND PLANNING?

- *To date planning for this has not been made available to current Champion Green user groups.*

2. WHAT FUTURE PLANS DOES NCC S&R HAVE FOR THE DEVELOPMENT OF SUITABLE FACILITIES FOR THE MULTIPLE SPORTS USER GROUPS, SCHOOLS AND PUBLIC AT CHAMPION GREEN AS PER THE PLANNED FACILITIES SITE?

- *To date planning for this has not been made available to current Champion Green user groups.*
- *This designated site has been established on the working plans confirmed by both TDC and NCC.*

3. WHAT FUTURE PLANS AND PROPOSALS DOES NCC S&R HAVE FOR A MULTI-USER SPORTS CIRCUIT AT CHAMPION GREEN?

- *The 2018 LTP submissions relating to this have been received by NCC & TDC from skating, cycling, athletics, a school, and health agencies.*
- *This designated site has been established on the working plans confirmed by both TDC and NCC.*

CHAMPION GREEN FACILITIES COMMITTEE

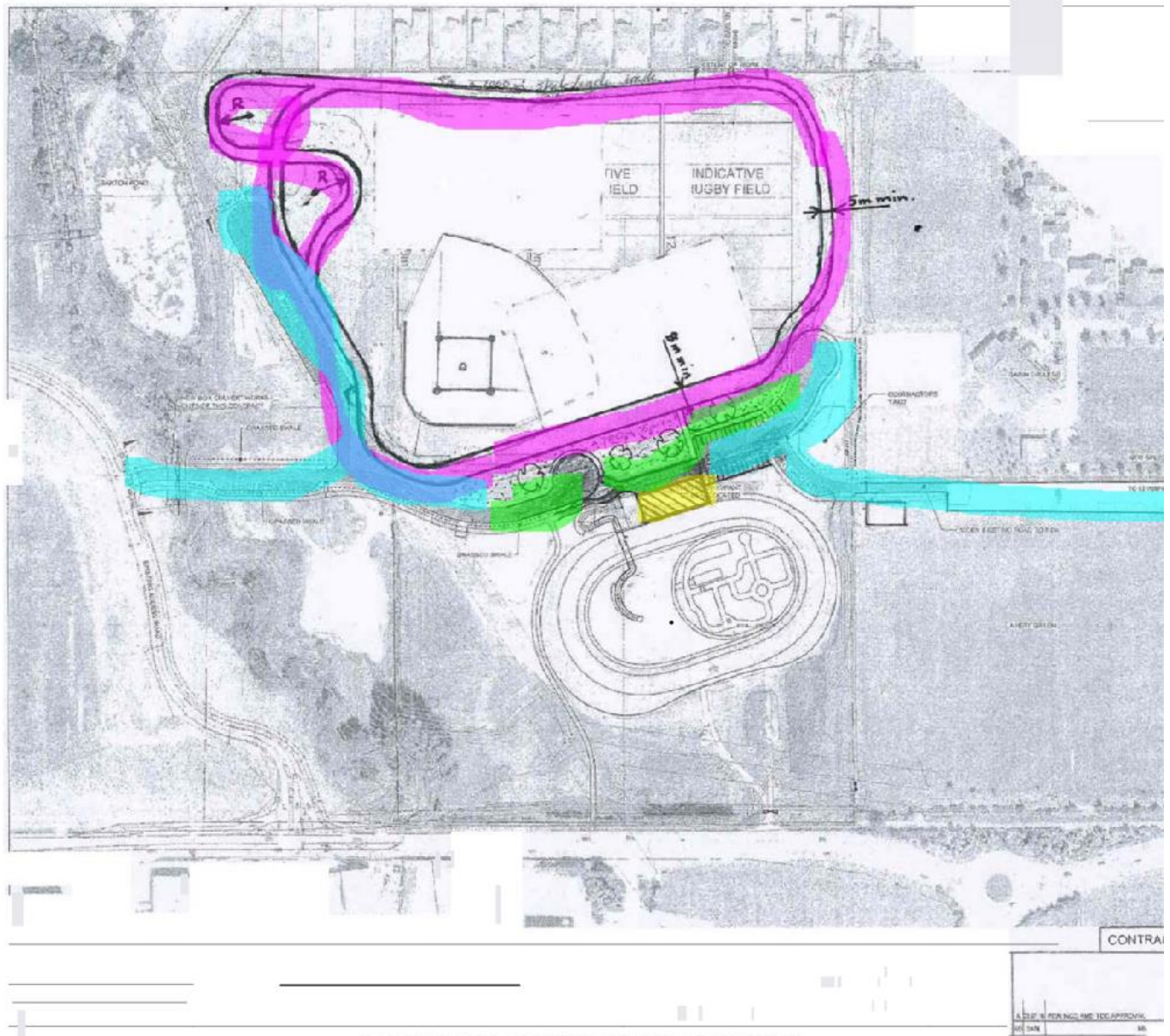
Contacts: Murray Cameron – 0276450033 murray@educationfutures.co.nz

Malcolm Saunders

malcolm.saunders@snap.net.nz

A2034613

Murray Cameron and Malcolm Saunders
Champion Green Facilities Committee
Sports and Recreation Committee, Public Forum
21 August 2018



CHAMPION GREEN DEVELOPMENTS

-  **Multi - Sports Circuit**
-  **Multi - Sports Facility**
-  **Landscaping**
-  **Connecting roads & car parks**

A2034613

Murray Cameron and Malcolm Saunders
Champion Green Facilities Committee
Sports and Recreation Committee, Public Forum
21 August 2018

James & Erica
Scottack Richards

Vertical Limits Ltd

Thank you for your time in considering our approach to Nelson City Council.

VERTICAL LIMITS

Vertical Limits is an indoor rock climbing gym that has been a part of our Nelson community since the end of 2001. Over the years it has had some financial difficulties. I took over the assets and the Vertical Limits brand in May 2016 as I believed it was a valuable resource for our community, used by many individuals, community groups and schools across our region.

Indoor climbing is a growing sport, is gaining a higher profile through various television programs and is to be included at the next Olympics in Tokyo 2020. Over the past two years, with a strong team of local volunteers we have transformed Vertical Limits and the brand into a family friendly environment for all ages; a safe resource for schools and other community groups to use. We operate with a mix of paid employees and volunteers and are achieving a break-even result.

As stated above, we believe that Vertical Limits is a valuable resource to our community. We currently have over 350 members with more joining every day. We are committed to investing in our young athletes and as such run four separate kids clubs with approximately 70 kids attending each week: a junior kid's for ages 4-7, a senior kid's club for ages 7-10, an intermediate kid's club for ages 11-13, and a youth night for ages 14-18. Additionally, our facilities are regularly used by a wide variety of community groups from local schools to Big Brother, Big Sister to businesses using our gym for team building exercises (please see the attached list for a more comprehensive list of the community groups that frequently use our establishment). During school terms 2 and 3 we have on average 250 students per week visiting Vertical Limits as part of the Outdoor Education Programs offered by their local colleges. With the advent of working holidays and the popularity of New Zealand as a travel destination, we have many customers who are young travellers looking to experience some of the adventure sports that Nelson has to offer. And lastly, we provide families with a safe (all staff have NZOIA qualifications), fun and challenging activity that appeals to all ages, young and old alike. To demonstrate just how valuable we are to our community, we have included with this letter several letters from various community groups expressing their support.

CURRENT SITUATION

We currently lease a building from Gibbons that we have been in for the past 17 years, however, that lease expires in December 2018 and cannot be renewed as the site is being redeveloped. Over the past 18 months, we have attempted to secure a new

A2035367

Public Forum
Sports & Recreation Committee
21 August 2018

building to buy or lease. Finding a suitable building, needing height for a climbing wall and in an accessible location has proved difficult, in fact impossible. We have therefore invested in the purchase of some land at [78 Vanguard Street](#) in Nelson with the vision to build a new fit for purpose centre.

NEW CENTRE

We have been quite fortunate in finding a suitable site right in the heart of Nelson's Central Business District. We believe that our current location helps to contribute to a vibrant and lively Nelson and enjoy that many of our customers arrive by foot or by bicycle and will continue to do so if we succeed in building our new center. It is our vision that this new center will add a further allure to Nelson in that we aspire to build a gym with some key features such as a competitive boulder wall and a speed climbing wall. These features, in addition to the sport climbing that we already provide, will both enable us to train our competitive climbers on all disciplines included in the Olympic Games as well as host both national and international competitions.

Having purchased the land, we are now looking at how to finance the building of this new center. This is a huge undertaking which will require some outside support in order to be realized; the business just does not generate enough revenue to make building the new center independently viable. Our estimate of the total expense of the building is approximately \$2,000,000 which includes the cost of the land (\$420,000), the cost of the building shell (\$1,000,000) and the cost of the outfitting (\$600,000 which includes services and interior outfitting). We have contacted numerous local businesses seeking support and have been very excited by the support received to date. A list of confirmed support is attached below.

In addition to local businesses, we are also seeking the support of you, our local Council, to help with the financial outlay of our community project. Specifically, we are requesting \$1,000,000, half of which would go to the building shell with the other half going towards the outfitting of the building. Although currently a Limited Liability Company, we are currently exploring the option to restructure our business as a Charitable Trust which would not only better reflect our commitment to our community but also enable us to seek grants and other fundraising opportunities.

We appreciate your time and consideration,

James Scoltock

A2035367

CONFIRMED LOCAL SUPPORT

- Nelson Pine
- Allied Concrete
- Freeman Roofing
- Hubbers Flooring
- GM Electrical
- Telfer Electrical Nelson
- Andrew Eggers Plumbing
- C & F Legal
- Greg Winn Contracting
- Staig and Smith,
- Chambers and Jackett Ltd.
- Barton Architecture
- POTIUS Building Systems Ltd
- Gavin Robertson Engineer

COMMUNITY GROUPS

Schools

- Broadgreen Intermediate
- Community College Nelson
- Garin College
- Hira School
- Hope School
- Mapua School
- Marlborough Community College
- Marlborough Girls College
- Motueka High School
- Nayland College
- Nelson College
- Nelson College for Girls
- Nelson Intermediate
- Ngatimoti School
- NMIT Fishers Training
- NMIT Outdoor Recreation Program
- Queen Charlotte College
- Riverlands School
- Tapawera School
- Te Aho O Te Kura Pounamu-The Correspondence School
- Tuiatemantangi School
- Waimea College
- Young Parents School

Other Community Groups and Businesses

- 23 Squadron Air Training Corps
- Abel Tasman Canyons
- Adult Learning
- Big Brothers, Big Sisters Nelson/Tasman
- Brownies
- CAMHS Day Program
- Department of Conversation
- Diabetes NZ Nelson Youth Branch
- Goleman

- Haka Tours
- Iron Duke Sea Scouts
- Marshall Builders
- McCashins Brewery Kitchen and Bar
- Motueka Church of Christ
- Nelson Aquatics Ltd
- Nelson Cadet Forces
- Nelson South Swimming Club
- NMDHB Mental Health Services
- NZOIA
- On Track, Adult Learning Support
- Post Haste
- Proton
- Red Cross
- Redwood Town Taekwon-do
- Richmond St. Johns
- Stoke Scouts
- Study Nelson
- Tasman Hockey Club
- Tasman Leisure Ltd
- Te Piki Oranga Ltd
- Team D
- Torpedo 7
- United Swimming Club
- Whenua Iti
- Woodbourne ILP
- YMCA Nelson

Nelson College for Girls



T e K u r a T a m a w ā h i n e o W h a k a t ū

Letter of Support

James Scoltock
Vertical Limits Climbing Gym
Nelson

3/2/18

Dear James

I coordinate the Outdoor Education programme for Nelson College for Girls. All our year groups (total around 160 students) have rock climbing included in their curriculum of study/activity and come regularly during the year to get the practical training required for field trips at the end of their respective programmes.

Nelson is quite void of quality natural rock to climb on. Thank you for providing the facilities that enable us to provide our students with an excellent training opportunity. Our goal is to get our students to a level of experience that they can confidently choose to climb indoor or on natural rock independently. Having Vertical Limits available to us allows continual success in that goal. I am thrilled to see that a good number of our students continue on with climbing beyond school supervision and join the vertical limits club (a fantastic extension to their learning). Additionally, the gym is a great informal social hub where our students meet and hang out to climb with friends.

Thank you James for working hard to make sure that your facility meets our educational needs. Our students require opportunities to practice top roping, bouldering, leading and abseiling. These resources have been well maintained and kept up to date. Without this facility we would be unable to offer the NCEA unit standards our students currently study for so I sincerely hope that you manage to keep Vertical Limits running for the community.

Regards,

Andy MacDonald (HoD)
Outdoor Education
Nelson College for Girls

Te Aho o Te Kura Pounamu
The Correspondence School
Nelson Office
Level 1
60 Rutherford Street
Nelson 7010

02 March 2018

Re - Vertical Limits

To whom it may concern

In 2017, at the request of some students, who learn through Te Kura due to 'Geographical Isolation' I booked an Event Day with Vertical Limits. An Event Day for Te Kura is a time when all our Year 1 to Year 10 students (aged 5-15) from the top of the South Island and the length of the West Coast are invited to meet each other and to take part in activities that they would normally not have the opportunity to experience.

We often only have about 20 students attend our Event Days as many have to travel by tractor, then boat and then car to an event however when we advertised our plan to attend Vertical Limits we had an overwhelming response.

Forty-two students each accompanied by one or two parents travelled from Seddon, Maud Island, Golden Bay and Hokitika, in fact all over the top of the South Island and the West Coast to take part in this. Many of our families arrived the day before to avoid rough sea conditions and stayed the night in Nelson to ensure that they could attend our Event Day at Vertical Limits.

We did not expect such a large number and the staff at Vertical Limits were amazing. They very quickly put plans in place to efficiently educate parents, teachers and students about the safety aspects of the day and before long everyone was wearing a harness and climbing walls that allowed them to improve their skills at their own pace, with encouragement and support from the Vertical Limits staff.

This remains our most popular Event Day with students regularly sending emails asking when we can do this again. I am sure that any sponsorship received from commercial or business groups, Nelson City Council, Tasman District Council or any other fundraising avenues would be put to good use and provide an opportunity for many students to broaden their experiences and challenge their skills.

Ngā mihi nui

Titiro whakamuri
Kokiri whakamua
*Look back and reflect
So you can move forward*



Gill Watt

Te Aho o Te Kura Pounamu
Year 1-10 Teacher
Aoraki - Southern Region
Level 1
60 Rutherford Street
Nelson 7010
Cell 027 557 3388
0800659988 Ex 3503

A2035367



Nayland College

Ph: +64 (3) 547 9769

F: +64 (3) 547 3498

E: xtend@nayland.school.nz

W: www.nayland.school.nz

A: 166 Nayland Road,
Stoke 7011, Nelson,
New Zealand

To Whom it may concern

Re: Vertical Limits rock climbing venue

As a teacher of outdoor education at Nayland College having access to an indoor climbing venue in Nelson as very important to developing our students in a positive and meaningful way. Rock climbing, along with other pursuits is an effective way of teaching our students important life skills and enjoying an active pursuit that will lead to a healthy life style and possibly a future working in the outdoor industry. We use the current facility at vertical limits regularly (up to 5 times a week during winter rock climbing programs) and it gives us a weather proof venue to ensure we can keep our outdoor programs running through the winter months.

If we did not have an indoor climbing venue in Nelson it would be a huge loss for our students. It would mean that it would not be possible to run an effective climbing program and we would not be able to make the most of the world class climbing sights in nearby Golden bay.

It would be great to see a new purpose-built facility that will continue to fulfil the needs of the local schools, clubs and organisations that have had so much success with Vertical limits climbing facility.

Your Sincerely

Ashley Whitehead



02 February 2018

James Scoltock
Vertical Limits
34 Vanguard St
Nelson 7010

To the team at Vertical Limits,

This is a letter stating the importance of the service your business provides.

Our team at DOC have used the Vertical Limits climbing gym on several occasions to conduct staff climbing training.

There is no other facility in Nelson, or the Top of the South, that I'm aware of, that provides a controlled environment for the kind of training we conduct. The facilities are safe, well maintained well staffed and are a convenient all-weather venue for training, recreational and sport climbing.

We value this facility and our team hope to be able to continue to using this facility in the future.

Nāku noa, nā,

Anja McDonald
Science Technician
Department of Conservation
Monro State Building
186 Bridge St
Nelson 7010
Phone | +64 27 4054465
VPN | 5038

Department of Conservation *Te Papa Atawhai*
Whare Kaupapa Atawhai / Conservation House
PO Box 10420, Wellington 6143,
www.doc.govt.nz

A2035367



112 Tipahi Street
Nelson 7010

Tel: 64 (0)3 548 9572

Fax: 64 (0)3 548 9550

admin@nelsonintermediate.school.nz
www.nelsonintermediate.school.nz

5 March 2018

To whom it may concern: Vertical limits

I am writing in support of Vertical Limits; to endorse the service they provide.

Nelson Intermediate is a frequent user of this facility and are always impressed with the professionalism and service provided. Our students and staff always enjoy this facility and we support Vertical Limits with funding applications to ensure its' long term tenure.

Yours sincerely,

Hugh Gully

Principal

Nelson Intermediate School

hgully@nelsonintermediate.school.nz



A2035367

Item 4.1: Public Forum: Attachment 2

Re: Vertical Limits Climbing Wall

7 February 2018

To whom it may concern,

Vertical Limits climbing wall is an integral component of the Senior Outdoor Education programme at Nelson College. Each of the four classes uses the wall seven times a year to train our students so they can safely enjoy outdoor rock climbing. The skills we teach at the climbing wall include, abseiling, belaying, rope safety, lead climbing, anchors and rescues. These skills are used in a range of tourism and industrial industries in Nelson and throughout the world as well as leading to rewarding past times including rock climbing, advance tramping, mountaineering, kayaking and caving.

James Scoltock and his team have brought a professional approach to running Vertical Limits and it is a safe and enjoyable place to climb. He also links in well with all the schools allowing us to use our own instructors to teach our students at the indoor rock wall.

I fully support James in his endeavour to develop a new climbing gym. Having a climbing gym in Nelson is essential to continue to develop Nelson into both an outdoor Mecca and to support the multitude of current and potential climbers.

Please do not hesitate to contact me if you have any questions.

Regards,

Steve Garside

Head of Outdoor Education at Nelson College,

LandSAR tutor Tai Poutini Polytechnic,

NZOIA Rock 2, Kayak 2, Bush 2 and Alpine 1.

A2035367

**Tasman Hockey Club
PO Box 3362
Richmond
NELSON 7050**

To Whom it May Concern

As a Club whose junior membership has benefited hugely from this form of entertainment, we write in support of James (Jimmy) Scoltock and his team at vertical limits.

We understand that Vertical Limits is having to relocate its exciting venture into a new building by the end of the year due to their current lease expiration, and we would really like to see this business retained as an option for not just our Club, which has a strong junior membership, but also for the greater Nelson and Tasman communities.

Jimmy has always supported our Club's end of year functions in the form of vouchers and significant discounts for our junior members which has encouraged more activity across a wider selection of options than would otherwise be available.

We wish Jimmy and his team all the best in their endeavours to fund a new building so they can continue to provide healthy activities for youth in this region.

Many thanks



Cherie Stringer
Acting Secretary
Tasman Hockey Club

A2035367

Item 4.1: Public Forum: Attachment 2

Dear potential supporter of Vertical Limits climbing gym.

I've been visiting Vertical Limits for over ten years now, during which time it has had three sets of owners, and been through various ebbs and flows. I've always enjoyed being able to climb there, but I'd consider its current management as a high point, of motivation, commitment and involvement.

Since I've been climbing there, group after group of youngsters have grown up there to teenagers and young adults. It's obviously been an important venue for them, to hang out after school while 'pulling plastic'. That seems to me to be such an important role for this place, somewhere that Nelson youth can come to, outside school, and mix with older and younger people, partaking in an active and healthy activity. They're not always climbing, half the time they're flirting and chatting, but what better environment to be doing that? And of course they do climb, and go on to represent Nelson and even New Zealand in climbing and bouldering events.

So, selfishly I'd be gutted to lose access to indoor climbing facilities. But more than that, I'd be disappointed if Nelson lost this venue for young nelsonians to hang out in a community-supervised active healthy environment.

If you are able in any way to support the plans for the future of Vertical Limits, in whatever way you are able, I would urge you to work with James Scoltock's team in Erica and Nico, to ensure the continuation of this important facility.

Many thanks in advance,

Eric Goodwin

25 Toitoti St
Nelson

A2035367



WAIMEA COLLEGE

Scott Haines, Principal

23 May 2018

Waimea College Special Education Department
Outdoor Education

To Whom It May Concern

I am Teacher in Charge of the Outdoor Education Programme at the Waimea College Special Education Department and I am writing in support of 'VERTICAL LIMITS' application for funding.

I have been running the Outdoor Ed Programme at Waimea College SPED for 10 years – we have two groups: Senior Outdoor Ed that runs most of Wednesdays and an Introduction Programme that runs for two hours on a Friday in Terms 1 and 4. Both are practical courses aimed at building self-esteem/confidence, independence and teamwork through experiencing a range of outdoor pursuits.



Vertical Limits is a wonderful facility for us as it provides a safe and controlled environment where we can challenge our students to get out of their comfort zone. Most of our students have intellectual and physical disabilities and when the weather is bad it means our programme can be somewhat compromised (our students are not always robust enough to carry on regardless of weather).

Having Vertical Limits is a great option for us as it provides a space to learn basic rope, harness, climbing and abseiling skills no matter what the weather is doing. Our students love it there and they get tremendous satisfaction out of their achievements – even if it is getting only one metre off the floor for the first time!

Please support this wonderful facility as it's such an asset to our community.

Yours sincerely

Paula Roberts
Teacher
Special Education Department

R:\StaffMembers\Admin\Office\2018\Special Ed\Vertical Limits.docx



2 February 2018

To whom it may concern,

We are writing to support the need for an indoor climbing wall facility in Nelson. Due to an expired lease, Vertical Limits are having to relocate their business and build a new facility, which comes at a great financial cost.

Indoor Climbing Walls are usually the first place individuals are exposed to the sport of rock climbing. Not only is it great for physical fitness, but also builds confidence, perseverance and resilience. Numerous community and school groups use climbing wall facilities and it would be a real loss if Nelson's only climbing wall was to close. One of the great assets of an indoor climbing wall, is you can participate rain or shine, light or dark! It has proved to be a great wet weather venue for us when running assessments for new instructors.

Vertical Limits are an Associate Member of our organisation (the New Zealand Outdoor Instructors Association) and are committed to safety through having qualified staff and instructors.

We hope you can support them in their quest to fund a new facility.

Kind regards,

A handwritten signature in black ink, appearing to read 'Sonya Sutherland', with a horizontal line underneath.

Sonya Sutherland
Business Manager
New Zealand Outdoor Instructors Association

A2035367

New Zealand Outdoor Instructors Association
Email admin@nzoia.org.nz Ph/Fax +64 3 539 0509 PO Box 1620, Nelson 7040
www.nzoia.org.nz



7 February 2018

To Whom It May Concern,

On behalf of Big Brothers Big Sisters of Nelson-Tasman, I would like to fully support the building of a new Vertical Limits gym for the Nelson-Tasman community.

Vertical Limits is a fantastic local facility that brings climbers of all levels and abilities together.

Vertical Limits provided a heavily subsidised event for our mentors and mentees in 2017. This was a special opportunity for the young people on our programme to visit Vertical Limits and give indoor rock climbing a go. Without this level of support they would not otherwise be able to participate, as the entry fees are out of reach for many of the families we work with, but we feel strongly they should have equal access to this amazing facility.

James and the team have gone one step further and also agreed to provide a 'Two for One' voucher to all of our community-based mentors so that they can take their 'little' to Vertical Limits at a time that is convenient to them. Rock climbing is such a good team building event as mentors can be the belayers for their mentees, which encourages trust and communication between the two.

If you have any further questions, please do not hesitate to contact me.

Yours sincerely

Chelsea Routhan
Programme Director

Ph: 03 545-9864 | Private Bag 39, Nelson 7040 | chelsea.routhan@bigbrothersbigsisters.org.nz

PORT NELSON
The Region's Gateway to the World



INTEPEOPLE
HUMAN RESOURCE CONSULTANTS

BOWATER
HYUNDAI



Lottery Grants Board
Te Puna Tāhūa
LOTTO FUNDS FOR YOUR COMMUNITY

Pub Charity

Nelson City Council
Te Kaitiaki o Nelson

Fulton Hogan

A2035367

fico finance

Pic's REALLY GOOD
PEANUT BUTTER

heartland



Rātā Foundation