

# **OPEN**

# **MINUTE ITEM**

# **ATTACHMENTS**

**Ordinary meeting of the  
Forestry Advisory Group**

**Thursday 4 April 2019  
Commencing at 9.00a.m.  
Ruma Mārama, Floor 2A**

**Civic House**

**110 Trafalgar Street, Nelson**

## **TABLE OF CONTENTS**

## **PAGE**

### **7 Forestry Update - Number 7 - April 2019**

- A. A2171177 - PF Olsen Power Point presentation regarding Tantragee  
Tree Removal

**2**

# Nelson City Council Tantragee Tree Removal

Thursday 4<sup>th</sup> April 2019

A2171177



PFOLSEN 



# The Site





# The Site



# Site Risks

- Safety
  - Residents, members of the public
- Environmental
  - Erosion, damage to archaeological site (Dun Mountain trail)
- Financial
  - Damage to houses/public infrastructure
- Reputational
  - NCC, PF Olsen, Contractors



# FAG asked PF Olsen to assess two different options:

1. Partial harvest and a fence strung between unpoisoned trees in combination with poisoning trees, and
2. Partial harvest in combination with poisoning trees with no fence installed

# Geotech Update

- Originally the Geotech report recommended that no poisoned trees be left on the hillside e.g. need full tree removal
- They have since come back and said:
  - That they are happy for full poisoning to take place...
  - Except around the Dun Mountain trail (public safety), where we need to remove the trees

# Poisoned Tree Example





# Poisoned Tree Example



# Preferred Hazardous Tree Management Plan

With the updated Geotech advice, we have changed the approach since the last FAG meeting.

Our preferred option is now:

- Zones 1 & 2: Poison trees over time
  - Begin with Zone 1 now
  - Poison Zone 2 every year in different patches for the next 5 years

*Contd.*

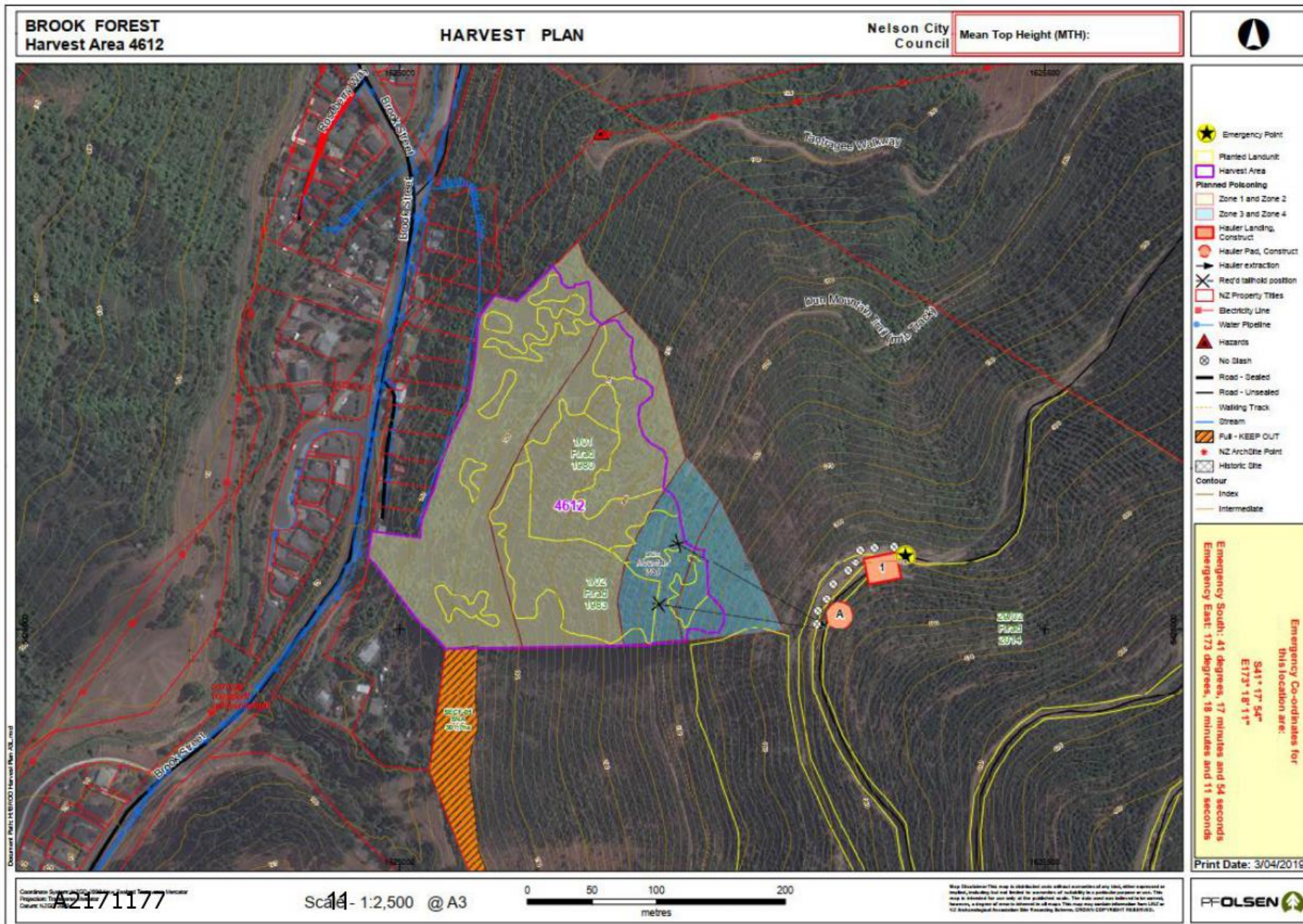




# Preferred Hazardous Tree Management Plan

- Zones 3 & 4: Tree Removal
  - Fell trees,
  - Cut trees in half
  - Extract trees to top skid site with cable hauler
- Because we are only removing a small number of trees, we feel there is no need for a debris catching fence as there will be reduced risk exposure above houses.
- Will still need 8-10 residences to evacuate.







# Tree Removal Risk Management

- Residents on top and bottom side of public road vacate houses
- Management of public recreational access points
- Traffic management plan
- Harvesting methodology
  - Fully mechanised, cut trees in half, 2 stage truck
- Insurances in place –NCC/PFO/Contractor
- Dun Mountain Trail: HNZ Authority to damage
- Slips in hillside: Revegetate ASAP after tree removal



# Estimated Costs

| Cost Breakdown                 | Estimate          |
|--------------------------------|-------------------|
| Land clearing cost             | \$ 139,000        |
| Earthworks                     | \$ 40,000         |
| Dun Mountain Track remediation | \$ 20,000         |
| PF Olsen Planning/Consultation | \$ 30,000         |
| PF Olsen Supervision           | \$ 5,000          |
| Replant                        | \$ 15,000         |
| TMP + Containers               | \$ 50,000         |
| Evacuation & NCC Costs         | \$ 40,000         |
| Geotech                        | \$ 10,000         |
| Archaeology                    | \$ 3,000          |
| Poison cost                    | \$ 20,000         |
| Contingency @ 20%              | \$ 74,400.0       |
| <b>Total Costs</b>             | <b>\$ 446,400</b> |



# Current Uncertainties

- Confirmation of insurance cover for contractor