

OPEN

MINUTE ITEM

ATTACHMENTS

**Ordinary meeting of the
Governance Committee**

**Thursday 20 April 2017
Commencing at 9.00am
Council Chamber**

Civic House

110 Trafalgar Street, Nelson

TABLE OF CONTENTS	PAGE
Motion	
A. A1750593 - The Suter Art Gallery - 6 month review - Governance - 20Apr2017	2

The Suter® Art Gallery Te Aratoi o Whakatū 6 Month Review & Looking Ahead







Motion.Motion

Attachment 1



Official Opening 1 October 201



Left: Friends of The Suter and Nelson Suter Art Society Preview 2nd October; Above: Public Opening 11am, 2nd October 2016



People Places, Perspectives Artworks from the Collection of The Suter by Craig Potton, Julie Catchpole and Julia Warren published to coincide with the opening of The Suter

The Suter® Art Gallery
Te Aratoi o Whakatū
The pathway of art for
the Nelson region



6

Above: Education at The Suter; Room 12, St Joseph's - first class to use the new Suter, October 2016.



Above: Rm 5 Tahunanui School;
Kowhaiwhai programme- looking at the
Pou in the Jane Evans Foyer, November
2016



Suter Education: Upper Moutere, clay programme November 2016

Glitter-arty



After LEOTC Education:
Central Normal School,
April 2017

Making art matter....

After School Classes: Suter Kids Club
MyArtSpace

Thursday talks & tours

Future:

Partnership between Suter and
Elson Suter Art Society

Art classes

Art history



EXHIBITIONS





Motion.Motion

Attachment 1





Motion.Motion

Attachment 1





COLLECTION



NEW ACQUISITIONS

Clockwise: Graham Bennett *Mark Time*, 2006-11 sculpture metal & slices of granodiorite stone (Gift);

Leo Bensemann *After Rain, Takaka* 1971;

Nigel Brown *Takaka Hills* oil on board;

Mark Time by Graham Bennett

COLLECTION:

Grows by

Purchases: (Acquisition funds allow for active development of the collection)

Acquisition funds: 5x40; Cuthbertson and Burton Bequests; Other bequests and specific donations

Gifts: (The majority of The Suter's collection has been gifted)

All acquisitions must comply with The Suter's Collection Policy.

Consideration is given to:

- Quality and significance of the work/ artist/ subject/ relationship to other collection items
- Condition; size; ongoing care requirements

COLLECTION:

Size matters!

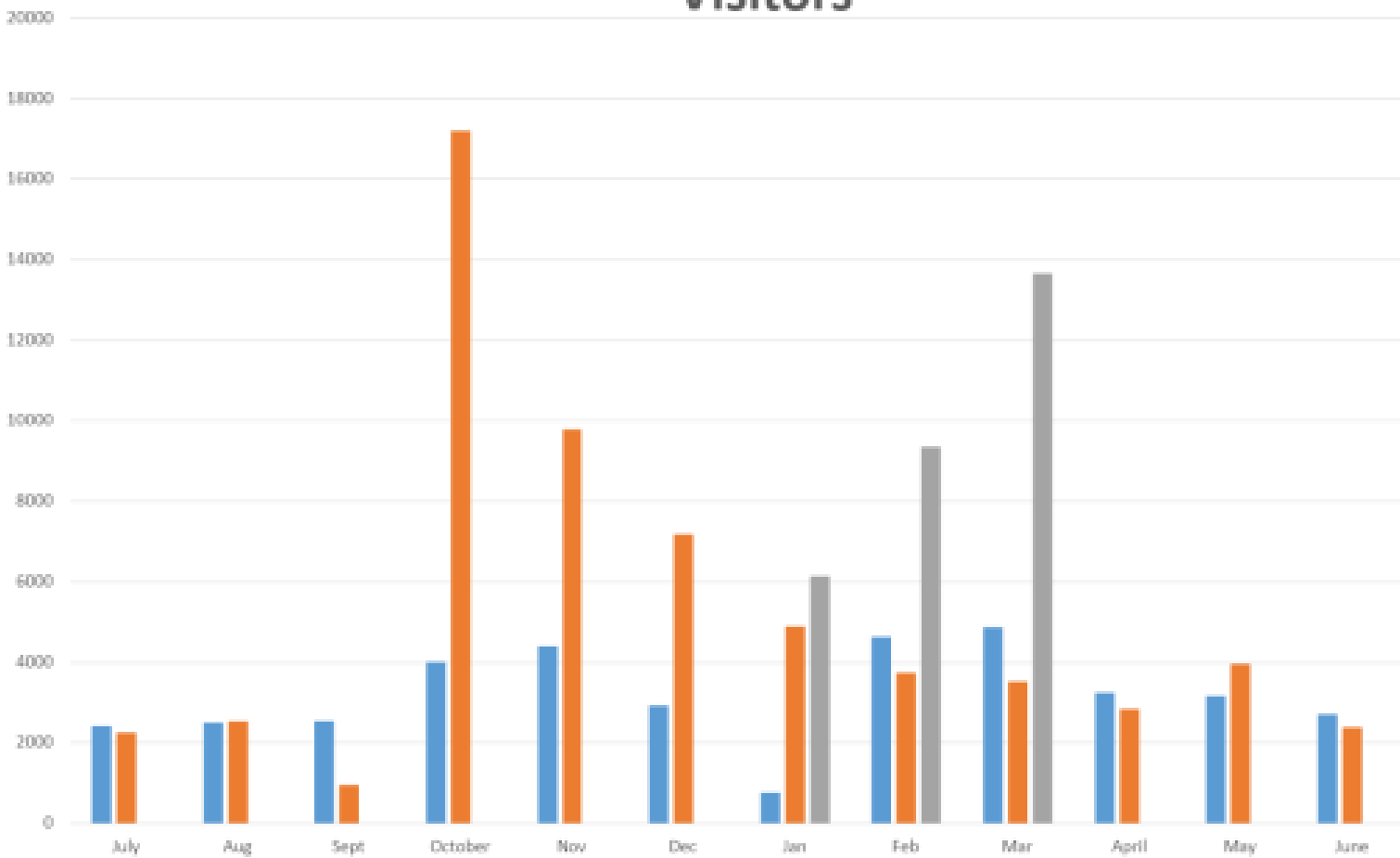




ection storeroom: State of the art storage, climate control, fire
action and security systems



Visitors





Free Admission

- Gratefully received by the public
 - Av. \$680 per month since opening in donation box
 - Visitors from outside the Nelson/ Tasman region often give a donation
 - Encourages repeat visitation
 - Suter accessible to all
-
- All New Zealand local authority supported public art galleries are free entry



PROMOTION

- www.thesuter.org.nz
- E-newsletter
- Facebook
- Instagram
- Twitter
- Word of mouth

- Print & tourism media

- Friends of The Suter
- Legacy Group
- Volunteers Programme





**VENUE HIRE: Jane Evans Foyer; Suter Theatre;
Education Room**

**Suter Theatre: 150 seat
auditorium**



bove: **Suter shop in Jane Evans Foyer**
ight: **Suter Café**





Suter Volunteer Programme

- Visitor hosts
- Archives
- Library
- Research
- Visitor surveys

In the future:
Guided tours

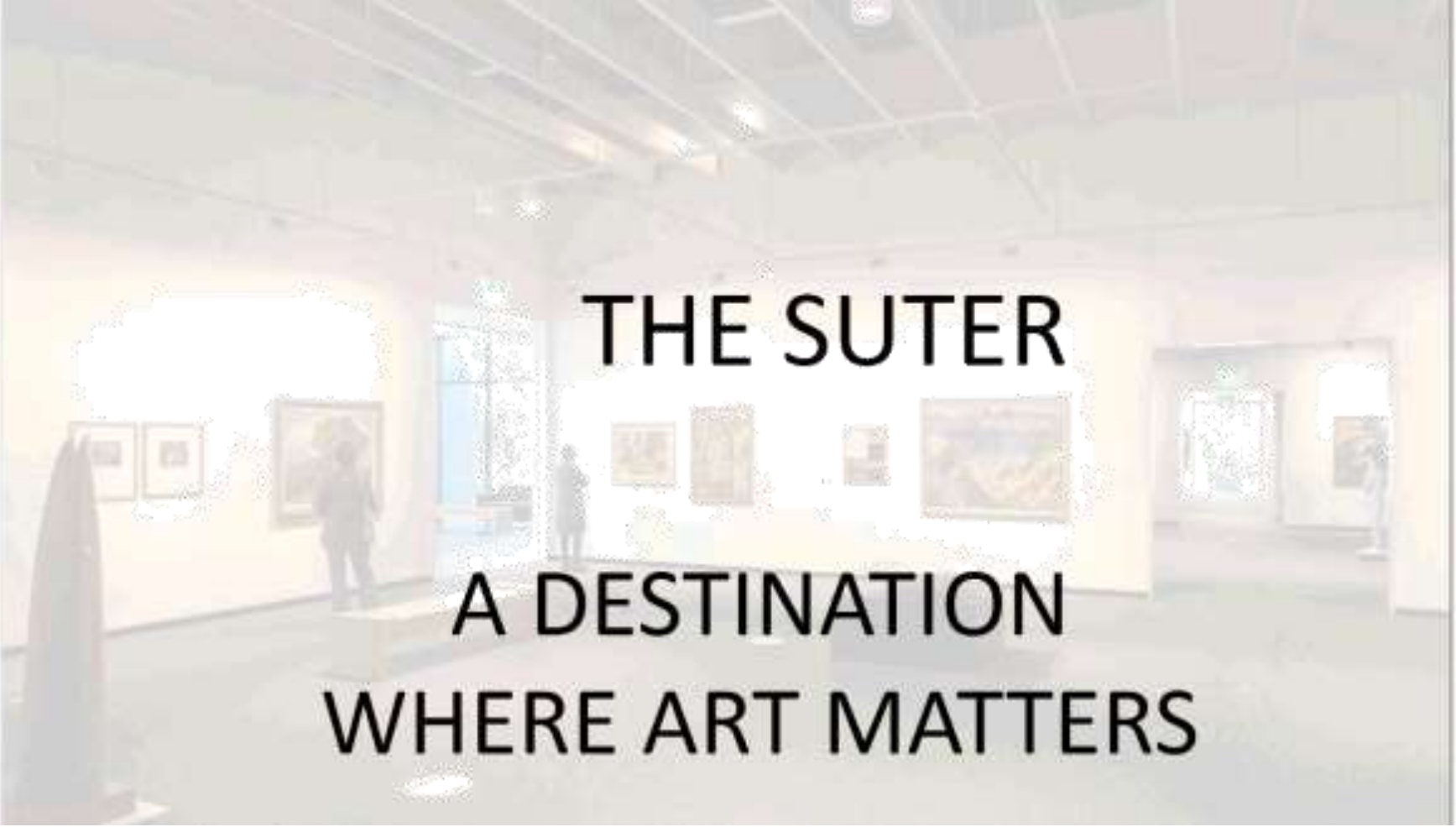


SUTER at a glance:

- Opened 1899; will soon celebrate 118 years open to the public
- Open 7 days a week; 362 days per annum (closed Good Friday, Christmas day and New Years Day)
- Exhibition galleries open 9.30am-4.30pm; Café 8am- 4pm

- Staff: 2 FT; 8 part time
- Governed by The Bishop Suter Trust





THE SUTER
A DESTINATION
WHERE ART MATTERS